

SPECIAL EVENT

PARKING

NO special event parking at:

Fonthill Plaza - Front Parking Lot • Young Thai's Plaza • Professional Arts Building - 2 Pelham Town Square



walk

5 minute walk from Glynn A. Green School (1353 Pelham Street)
5 minute walk from Marlene Stewart Streit Park (55 Park Lane)
5 minute walk from Shorthills Villa (1532 Pelham Street North)
5 minute walk from Fonthill Baptist Church (1414 Pelham Street)
10 minute walk from Fonthill United Church (42 Church Hill)
15 minute walk from Fonthill Legion/Briggys's/Star Tile
20 minute walk along the Steve Bauer Trail from Line Avenue



cycle

5 minute bike ride from Hurricane Road
5 minute bike ride from Spruceside Crescent
10 minute bike ride from the Pelham Arena
15 minute bike ride from downtown Ridgeville



shuttle

Special Event Shuttle service will begin at 4:30 p.m. and pick up from the Pelham Arena: 1120 Haist Street
Shuttle service will end nightly at 9:30 p.m.
Regular Pelham Transit available until 7:00 p.m.
Dial-a-Ride available from 7:00 to 9:30 p.m. Please call 48 hrs ahead for this service 905 892-2607, ext. 347



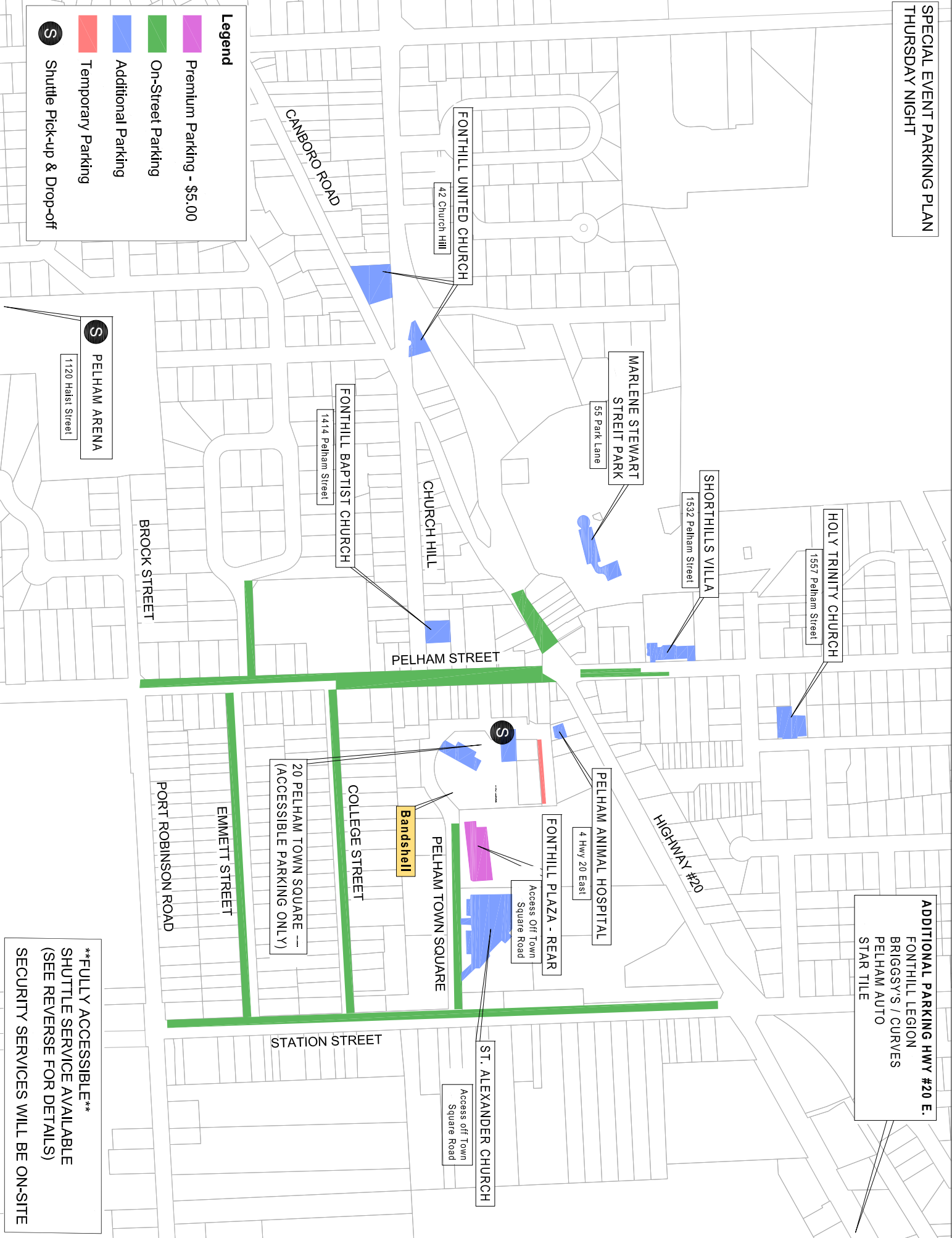
park

Premium Parking available for \$5.00 at the Fonthill Plaza – Pelham Town Square entrance.
Hosted by the Fonthill & District Kinettes.

Visit pelham.ca/special-events-parking for more details.

SPECIAL EVENT PARKING PLAN
THURSDAY NIGHT

ADDITIONAL PARKING HWY #20 E.
 FONTHILL LEGION
 BRIGGSYS / CURVES
 PELHAM AUTO
 STAR TILE



Legend

- Premium Parking - \$5.00
- On-Street Parking
- Additional Parking
- Temporary Parking
- Shuttle Pick-up & Drop-off

S PELHAM ARENA
 1120 Haist Street

FONTHILL UNITED CHURCH
 42 Church Hill

MARLENE STEWART
 STREIT PARK
 55 Park Lane

SHORTHILLS VILLA
 1532 Pelham Street

HOLY TRINITY CHURCH
 1557 Pelham Street

FONTHILL BAPTIST CHURCH
 1414 Pelham Street

CHURCH HILL
 PELHAM STREET

PELHAM ANIMAL HOSPITAL
 4 Hwy 20 East

FONTHILL PLAZA - REAR
 Access Off Town
 Square Road

PELHAM TOWN SQUARE
 Bandshell

ST. ALEXANDER CHURCH
 Access off Town
 Square Road

20 PELHAM TOWN SQUARE
 (ACCESSIBLE PARKING ONLY)

****FULLY ACCESSIBLE****
 SHUTTLE SERVICE AVAILABLE
 (SEE REVERSE FOR DETAILS)
 SECURITY SERVICES WILL BE ON-SITE